

MONTHLY MEMBERSHIP PROGRESS REPORT

LOCATION AUSTRALIA

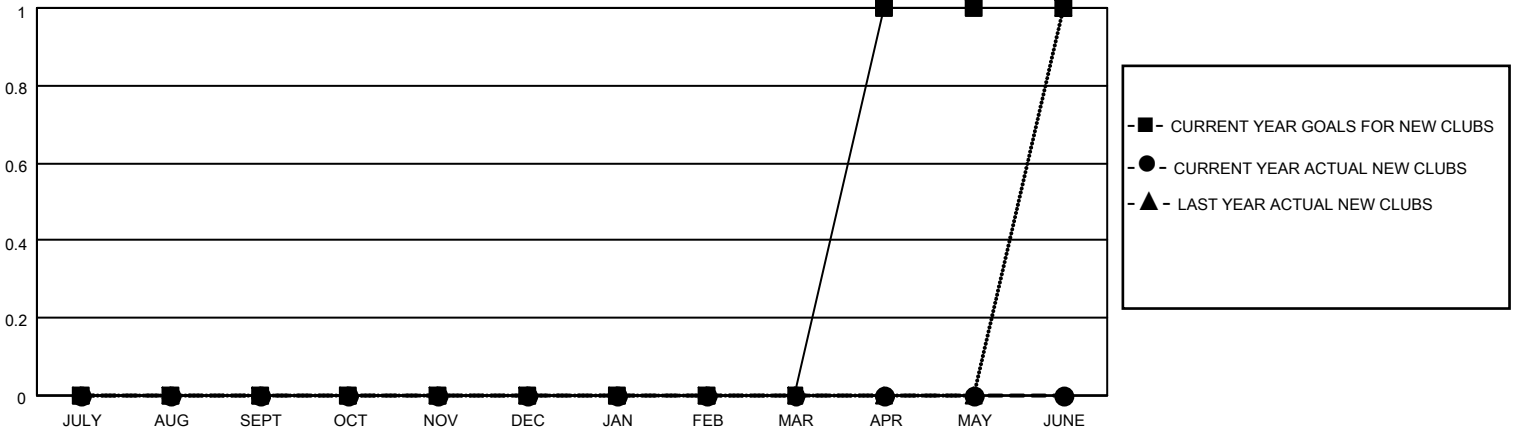
District 201N2

Results as of: 5/31/2022

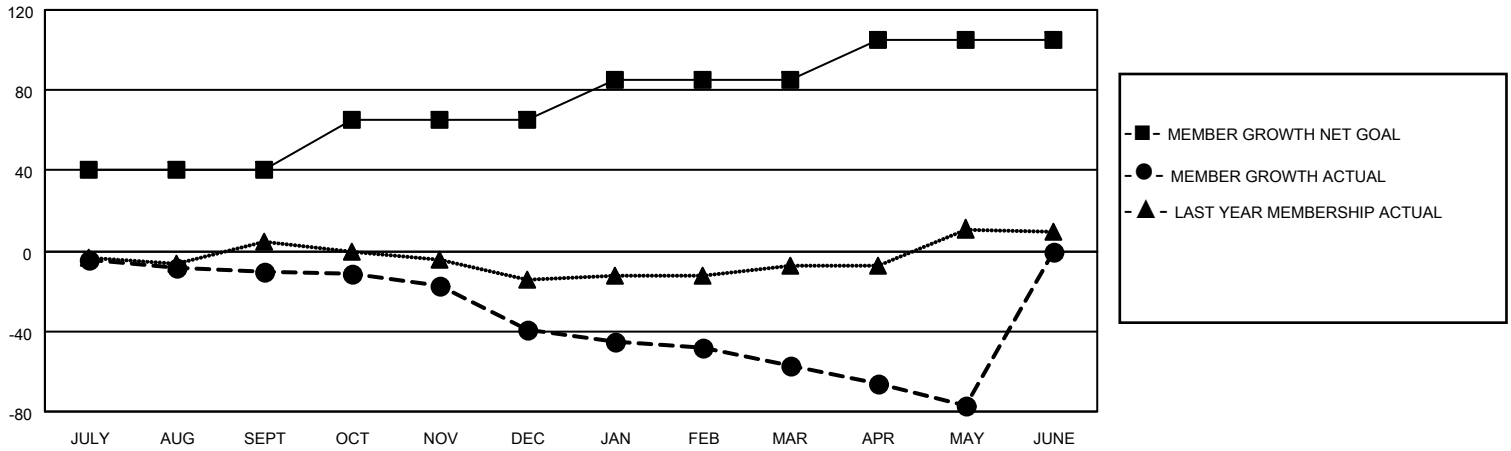
Clubs			
RESULTS FOR 2021-2022			
QUARTER	NEW CLUB GOAL	NEW CLUBS	DROPPED CLUBS
JULY/AUG/SEPT	0	0	0
OCT/NOV/DEC	0	0	0
JAN/FEB/MAR	0	0	0
APR/MAY/JUNE	1	0	0

Members			
RESULTS FOR 2021-2022			
QUARTER	MEMBER GROWTH NET GOAL	MEMBER GROWTH ACTUAL	DROPPED MEMBERS ACTUAL (including transfers)
JULY/AUG/SEPT	40	22	26
OCT/NOV/DEC	25	21	46
JAN/FEB/MAR	20	25	39
APR/MAY/JUNE	20	25	40

GOALS AND ACTUAL NEW CLUBS CUMULATIVE



GOALS AND ACTUAL MEMBERS CUMULATIVE



DROPPED CLUBS: 0

35 CLUBS OF 67 ADDED 1 OR MORE NEW MEMBERS

GENDER DISTRIBUTION

MALE	920 (63.93%)
FEMALE	519 (36.07%)
NON BINARY	0 (0.00%)
PREFER NOT TO ANSWER	0 (0.00%)

DROPPED MEMBERS

[CLICK HERE FOR CUMULATIVE MEMBERSHIP DATA](#)

DECEASED	14
CLUB CANCELLED	0
OTHER	137
TOTAL	151

TOTAL FAMILY UNIT MEMBERS 175

FAMILY MEMBERS PAYING HALF DUES 91